

**REGIONAL SPECIALISED METEOROLOGICAL CENTRE-TROPICAL CYCLONES, NEW DELHI
TROPICAL WEATHER OUTLOOK**

DEMS-RSMC SPECIAL TROPICAL CYCLONES NEW DELHI DATED 25.02.2022

TROPICAL WEATHER OUTLOOK FOR NORTH INDIAN OCEAN (THE BAY OF BENGAL AND ARABIAN SEA) VALID FOR NEXT 120 HOURS ISSUED AT 0600 UTC OF 25.02.2022 BASED ON 0300 UTC OF 25.02.2022.

BAY OF BENGAL:

A CYCLONIC CIRCULATION IS LIKELY TO FORM OVER SOUTH ANDAMAN SEA AROUND 27TH. UNDER ITS INFLUENCE, A LOW PRESSURE AREA IS LIKELY TO FORM OVER SOUTHEAST BAY OF BENGAL (BOB) AND ADJOINING SOUTH ANDAMAN SEA AROUND 28TH.

SCATTERED LOW AND MEDIUM CLOUDS WITH EMBEDDED MODERATE TO INTENSE CONVECTION LAY OVER ANDAMAN SOUTHEAST ADJOINING SOUTHWEST BAY OF BENGAL AND ISOLATED WEAK TO MODERATE CONVECTION LAY OVER EASTCENTRAL BAY OF BENGAL.

PROBABILITY OF CYCLOGENESIS (FORMATION OF DEPRESSION) DURING NEXT 120 HRS:

24 HOURS	24-48 HOURS	48-72 HOURS	72-96 HOURS	96-120 HOURS
NIL	NIL	NIL	NIL	NIL

ARABIAN SEA:

SCATTERED LOW AND MEDIUM CLOUDS WITH EMBEDDED MODERATE TO INTENSE CONVECTION LAY OVER SOUTHCENTRAL ARABIAN SEA.

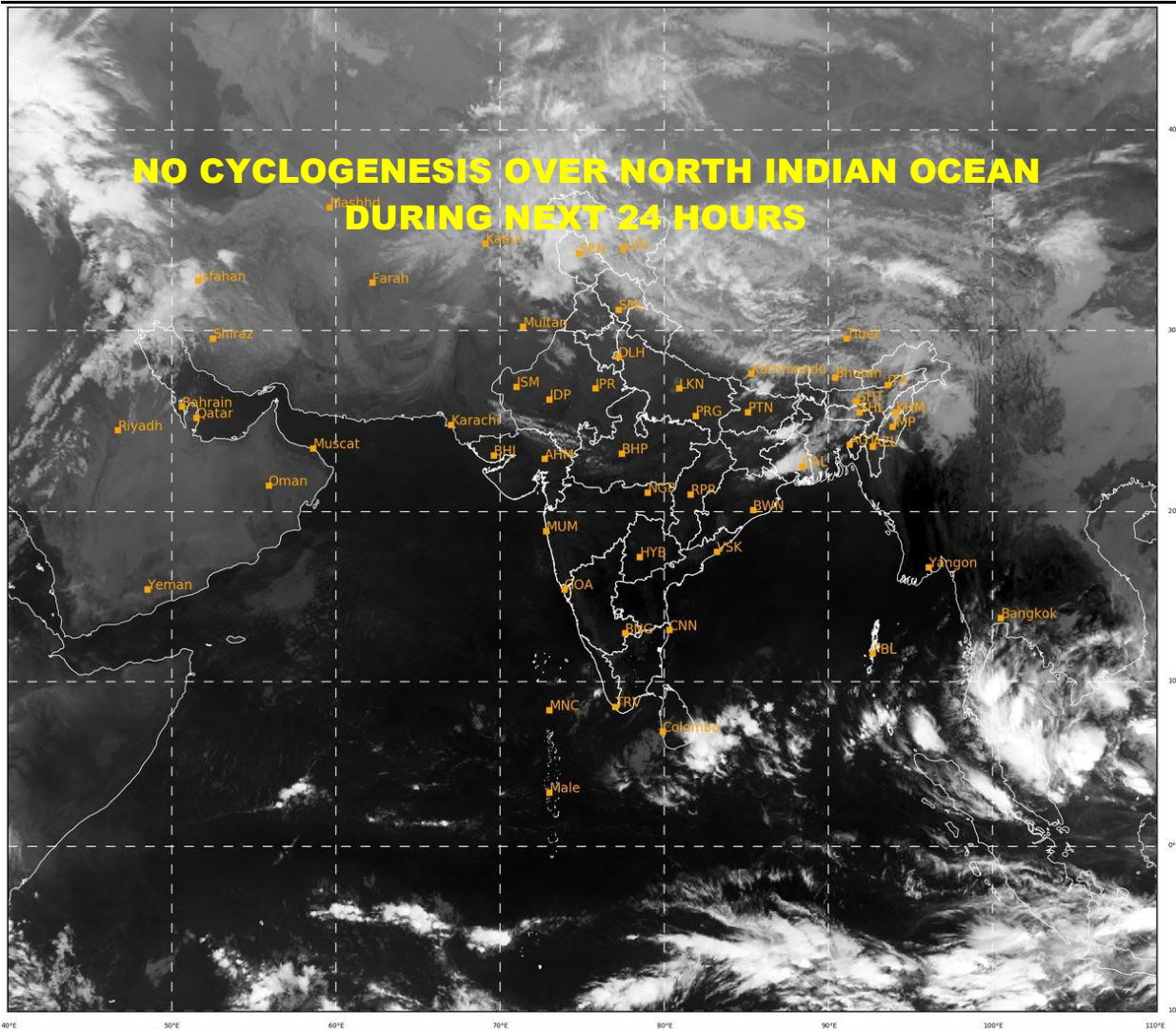
PROBABILITY OF CYCLOGENESIS (FORMATION OF DEPRESSION) DURING NEXT 120 HRS:

24 HOURS	24-48 HOURS	48-72 HOURS	72-96 HOURS	96-120 HOURS
NIL	NIL	NIL	NIL	NIL

REMARKS: NIL

SAT : INSAT-3D IMG
IMG_TIR1 10.8 um
LIC Mercator

25-02-2022/(0300 to 0327) GMT
25-02-2022/(0830 to 0857) IST



479

929

IMD, DELHI

PROBABILITY OF CYCLOGENESIS (FORMATION OF DEPRESSION):NIL: 0%, LOW: 1-33%, MODERATE: 34-66% AND HIGH: 67-100% This is a guidance Bulletin for the WMO/ESCAP Panel Member countries,. Please visit respective National websites for Country specific Bulletins